



UNILITE[®]



SOLAINCO PERU
S.A.C.

WELCOME



#BUILTTOUGH

Unilite has built lights tough since 1981. It remains family run, just like it was at the very start when there were only 2 members of staff. The range back then was limited to just a handful of product lines. Wind the clock forward 41 years and now there are over 125 products, all with that same Built. Tough. DNA.

CORE PRODUCT RANGE

Our core product range is still based on superior portable lighting but has now fully migrated over to the latest LEDs. The only bulbs left in the company are growing in the grounds of Unilite HQ! This core product range features site lighting, inspection lights, head

torches and flashlights. Simply put, these have been designed for your working environment and to make your life easier.

NEW PRODUCT LINES

In addition to lighting, we have expanded into several key product ranges including safety glasses, hardened waterproof cases, and a full and varied range of merchandise. You can even see how they 'measure up' with our new industrial heavy duty tape measures. These aren't merely a 'flash' in the pan but are instead carefully thought-out product extensions that naturally compliment our existing range. Every product that rolls off the production line has the Built. Tough. DNA. flowing through its veins.

TALK TOUGH

Anyone can "talk tough". We back it up with rigorous testing and superior construction materials. These materials are chosen at the start of the design process to ensure they keep your Unilite tough, yet lightweight. When the electrical components are chosen, we think quality over everything else. When they are eventually put through their paces in testing, we iron out any flaws and ensure that the final product reaches both ours and your high standard. As well as in house testing, we test to impartial ANSI FL1 standards which is where we get our final product specifications from including lumens, runtime and IP ratings.

LITHIUM POWER

Powering most of our lighting range is the next generation of lithium batteries. These are naturally better for the environment than disposable batteries and we work carefully within our supply chain to minimise the environmental footprint of our product manufacturing. This environmental spirit is carried over to our packaging, with an average of 90% of our packaging now being recyclable. We will keep pushing towards 100%.

THE BEST STAFF

Behind every great company are great employees. Ready to help with your enquiries, our support and sales team can tackle any enquiry with their

extensive product and industry knowledge. The marketing and design team create impressive visual displays and marketing material that help to 'shine a light' on the product's best features. With a passion for what we do, the Unilite team have all the requisite skills to help you.

BRIGHT FUTURE

Of recent years the company has grown from strength to strength. With a tripling of our turnover, the securing of 10 worldwide exclusive distributors, doubling of the number of employees in the UK as well as a new cutting-edge HQ's, it's safe to say the future is looking very bright indeed.

We hope you look forward to using our products as much as we have enjoyed designing and making them for you.

From
The Unilite Team



CONTENTS

WIRELESS CHARGING

WCFL12	Wireless Charging Flashlight	NEW	7
WCHX7	Wireless Charging Work Light	NEW	8
WCSTL	Single Wireless Charging Pad	NEW	10
WCDBL	Double Wireless Charging Pad	NEW	11

MISCELLANEOUS LIGHTS

BLT-1	USB Beanie Light	NEW	12
PB-7800	Power Bank with Flashlight	NEW	13
L-1000	Dual LED Lantern	NEW	14
L-1800	Dual LED Lantern	NEW	15
UV-CURE	UV Curing Gun Kit	NEW	17

HIGH CRI LIGHTS

CRI-KIT	High CRI Detailing Kit		19
CRI-H200R	High CRI Sensor Headtorch		20
CRI-2300	High CRI Work Light		21
CRI-1900	High CRI Work Light	NEW	22
CRI-3250	High CRI Work Light	NEW	23
CRI-1650R	High CRI Compact Work Light	NEW	24
CRI-1250R	High CRI Inspection Light		27
RA-700R	High CRI Right Angle Light	NEW	28
CRI-700R	High CRI Compact Work Light		29

COMPACT WORK LIGHTS

SLR-500	Compact Work Light		30
SLR-1000	Compact Work Light		31
SLR-1750	Compact Work Light with Power Bank		32
SP-750	Compact Speaker Work Light		33
HX1500R	Compact Work Light		34
HX-BL	Bonnet Bar for Work Lights		35

WORK LIGHTS

SLR-3500	Rechargeable Work Light	NEW	36
SLR-5500	Rechargeable Work Light	NEW	37
SLR-4400	Dual Power Work Light	NEW	38
SLR-6000	Dual Power Work Light	NEW	39
SP-4500	Dual Power Speaker Work Light		40
RL-5250	Industrial 360° Lantern	NEW	41

INSPECTION LIGHTS

CT-2	Compact Folding Pocket Light		42
PL-3	Inspection Penlight		43
IL-175R	Folding Inspection Light		44
IL-375R	Folding Inspection Light	NEW	45
IL-925R	Folding Inspection Light	NEW	47
IL-625R	Inspection Light		48
IL-SIG1	Signalling Inspection Light	UPGRADED	49

HEADTORCHES

PS-HDL2	Helmet Headtorch		50
HL-4R	USB Helmet Headtorch		51
HL-5R	Sensor Headtorch	UPGRADED	52
PS-HDL6R	Dual Power Helmet Headtorch		53
HT-450	Dual LED Headtorch	NEW	54
HL-6R	Dual Power Dual LED Headtorch		55
HL-7R	Dual Beam Sensor Helmet Headtorch		56
HL-8R	Dual Beam Sensor Headtorch	NEW	57
HT-650R	Dual Power Dual LED Headtorch	NEW	58
PS-HDL9R	Industrial High Power Headtorch		59
RAIL-HDL9R	Industrial High Power Headtorch		60
HL-11R	Industrial Super Bright Headtorch		61

FLASHLIGHTS

TL-5	Industrial IP68 Flashlight		63
PT-2	Aluminium Penlight		64
FL-2	Aluminium Flashlight		65
FL-4R	USB Aluminium Flashlight		66
FL-11R	USB Aluminium Flashlight		67

INTRINSICALLY SAFE LIGHTS

ATEX-PL1	Zone 0 Penlight		68
ATEX-FL4	Zone 0 Flashlight		69
ATEX-RA2	Zone 0 Right Angle Torch		70
ATEX-H2	Zone 0 Headtorch		71

TOOL BAGS, TAPES, GLASSES & CASES

UR4.5	Rogue 4.5 Tool Bag		73
UR4.5-POUCH	Rogue 4.5 Organiser Pouches		75
MT5M1	5m Heavy Duty Tape Measure	NEW	77
MT5M2	5m Heavy Duty Tape Measure	NEW	78
MT8M3	8m Heavy Duty Tape Measure	NEW	79
GLASSES-KIT	Glasses Accessories Kit	NEW	81
SG-YCB	Safety Glasses - Blue Light	NEW	82
SG-YDS	Safety Glasses - Dark Smoke	NEW	83
SG-YIO	Safety Glasses - Indoor/Outdoor	NEW	84
SG-YFG	Safety Glasses - Foam Gasket	NEW	85
CASES	Waterproof Hard Cases	NEW	87

TRIPODS

TRIPOD-MINI	Heavy Duty Mini Tripod	NEW	89
TRIPOD-SGL	Single Head Tripod		90
TRIPOD-DBL	Double Head Tripod		91
TRIPOD-SW	Single Head Tripod with Wheels		92
TRIPOD-360	Multi-use Tripod with Magnetic Plate		93



WCFL12 | WIRELESS FLASHLIGHT

- 1200 lumen white LED, 6500K
- Ultra tough nylon, aluminium & TPR construction
- Multi-faceted reflector for long distance beam
- Dual switches for easy mode selection
- Memory switch - remembers last mode used
- Press & hold for 2 seconds for Strobe mode
- IP68 dust & water proof - 1m submersible
- IK07 super tough shock resistant construction
- 2m drop resistant

- Built-in USB-C charging port with protective cover
- 3 Battery level and charging indicators
- 2A direct USB-C charging - fast 4 hours charge time
- 1m USB-C charging cable included
- Can be wirelessly charged with Unilite WCSGL or WCDBL wireless charging pads

BATTERY 3.7v 2600mAh Li-ion
WEIGHT 215g
DIMENSIONS Ø41 x 159mm



LUMEN 1200LM | **RUNTIME** 2-200H | **BEAM** 251M | **IP RATING** IP68/IK07



WCHX7 | WIRELESS COMPACT WORK LIGHT

- 700 lumen white COB LED, 6500K
- Additional 275 lumen SMD LED spot beam, 6500K
- Ultra tough nylon, aluminium & TPR construction
- 180° Rotating stand with super strong magnetic base
- IP65 dust & water resistant
- IK07 super tough shock resistant construction
- 2m drop resistant
- Built-in USB-C charging port with protective cover
- 3 Battery level and charging indicators
- 2A direct USB-C charging - fast 4 hours charge time
- 1m USB-C charging cable included
- Can be wirelessly charged with Unilite WCSGL or WCDBL wireless charging pads

BATTERY 3.7v 2600mAh Li-ion
WEIGHT 218g
DIMENSIONS 97 x 83 x 39mm



LUMEN 700LM | RUNTIME 2.5-10H | BEAM 118M | IP RATING IP65/IK07



WCSGL | SINGLE WIRELESS CHARGING PAD

- Super tough nylon polymer & ABS construction
- Strong magnets on the rear for attaching to magnetic surfaces
- Built-in screw holes for wall mounting
- Strong magnets on the front for attaching Unilite wireless products
- Pull-out secure phone holder for charging wireless mobile phones
- IK07 tough construction - 2m drop proof
- IP20 Dust resistant
- Built-in USB-C charging port
- Normal Charge Input: 5V-2A
- Fast Charging Inputs: 12V-1.5A / 9V-2A / 5V-3A
- Charging cable not included
- Quick charging 3.0 USB-C cables available to purchase separately



WCOBL | DOUBLE WIRELESS CHARGING PAD

- Super tough nylon polymer & ABS construction
- Strong magnets on the rear for attaching to magnetic surfaces
- Built-in screw holes for wall mounting
- Strong magnets on the front for attaching Unilite wireless products
- Pull-out secure phone holder for charging wireless mobile phones
- IK07 tough construction - 2m drop proof
- IP20 Dust resistant
- Built-in USB-C charging port
- Normal Charge Input: 5V-2A (only suitable for one charging location)
- Fast Charging Inputs: 12V-1.5A / 9V-2A / 5V-3A
- Quick charging 3.0 USB-C cable included & required for dual charging



WEIGHT 335g | **DIMENSIONS** W 190.5 x H 101.2 x D 28.1mm

WEIGHT 450g | **DIMENSIONS** W 290.5 x H 101.2 x D 28.1mm



BLT-1 | USB BEANIE LIGHT

- 250 lumen white COB LEDs, 6500k
- Red 625nm static & flashing modes
- 2 - 30 hours runtime
- Light is easily removed from hat
- Built-in USB-A connector with protective cover
- Directly charged via a USB port
- High quality 3.7v 420mAh li-po battery
- Super fast charge time - 1.5 hours
- IPX5 water resistant

- Comfortable knitted Beanie, one size fits all
- Fabric: 35% acrylic 65% polyester
- Machine washable at 30°C

BATTERY 3.7v 420mAh Li-Polymer
WEIGHT 27g (light only)
DIMENSIONS 73.5 x 41 x 15mm

PB-7800 | POWERBANK WITH FLASHLIGHT

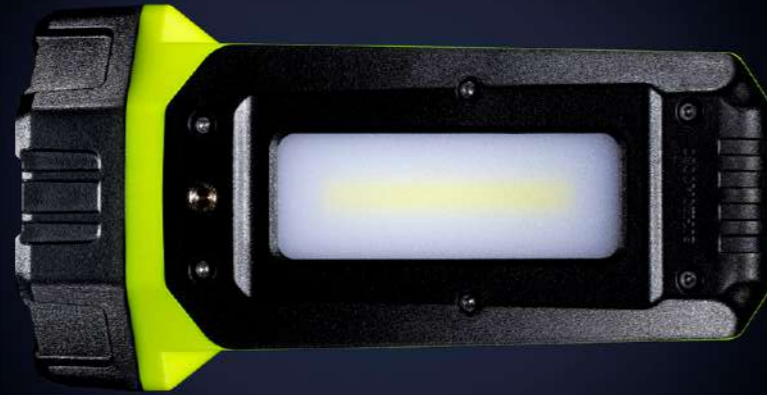
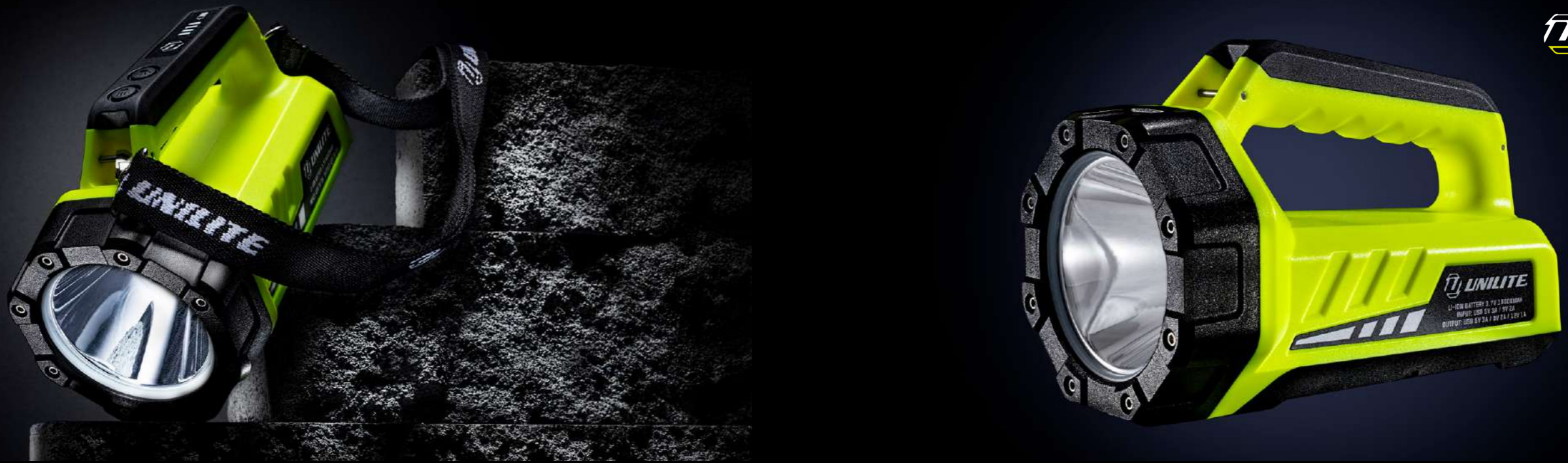
- Industrial magnetic powerbank with flashlight
- High quality 3.7v 7800mAh Li-ion battery
- Super tough nylon and TPR construction
- Intelligent multiple outputs - 5V 2.4A / 9V 2A / 12V 1.5A
- Faster 2A USB-C charging - 5 hour charge time
- Over-charge, over-load, deep-discharge and short-circuit protection
- Battery level and charging indicators

- 250 lumen 6500k SMD LED flashlight with flashing mode
- IK07 Shock proof - 2m drop proof
- IP65 Dust & water resistant
- Super strong magnetic base
- Sturdy rear metal pocket clip
- 1m high quality USB-C charging cable included

BATTERY 3.7v 7800mAh Li-ion
WEIGHT 265g
DIMENSIONS 114 x 65 x 32mm

LUMEN 250LM | **RUNTIME** 2-30H | **BEAM** 13M | **IP RATING** IPX5

LUMEN 250LM | **RUNTIME** 35H | **BEAM** 21M | **IP RATING** IP65/IK07



L-1000 | DUAL LED LANTERN

- 1000 lumen white spot beam LED, 6500k
- Additional 750 lumen COB LED floodlight, 6500k
- Super tough polycarbonate, ABS & aluminium construction
- Glow-in-the-dark strip around reflector for extra visibility
- Easy press dual switches for easy mode selection
- Convenient shoulder carry strap included
- Threaded hole in the base for attaching to tripods
- High power 8000mAh li-ion battery
- 2A USB power bank for charging devices
- Battery level & charging indicator LEDs
- Faster USB-C charging - 4.5 hour charge time

BATTERY 3.7v 8000mAh Li-ion
WEIGHT 730g
DIMENSIONS 108 x 200 x 131mm

L-1800 | DUAL LED LANTERN

- 1800 lumen white spot beam LED, 6500k
- Additional 1000 lumen COB LED floodlight, 6500k
- Red static & red flashing modes
- Super tough polycarbonate, ABS & aluminium construction
- Glow-in-the-Dark strip around reflector
- Easy press dual switches for easy mode selection
- Threaded hole in the base for attaching to tripods
- Convenient shoulder carry strap included
- Battery level & charging indicator LEDs
- Super high power 18,000mAh li-ion battery
- Multiple USB power bank outputs - 5V 3A / 9V 2A / 12V 1A
- Intelligent multiple USB-C charging inputs - 5V 3A / 9V 2A
- Faster 2A and 3A charging - 7 or 8 hours charge time

BATTERY 3.7v 18,000mAh Li-ion
WEIGHT 773g
DIMENSIONS 108 x 200 x 131mm

LUMEN 1000LM | **RUNTIME** 6.5-28H | **BEAM** 532M | **IP RATING** IPX6

LUMEN 1800LM | **RUNTIME** 9-390H | **BEAM** 760M | **IP RATING** IPX6



UV-CURE | UV CURING GUN KIT

- High power 66W ultra-hi-flux UV-A LEDs
- Up to 1s curing time for some UV primers
- Powerful irradiance with maximum UV-A intensity of 55,000 $\mu\text{W}/\text{cm}^2$ at 20 cm (8 inches)
- Only powers and emits UV-A, no harmful UV-B or UV-C
- Successfully tested on UV paint products by these major paint manufacturers - PPG, Akzo Nobel, BASF, Axalta, Doppon etc
- Super tough aluminium & polyamide construction
- Efficient built-in cooling system keeps the lamp cool to maintain optimum light output during extended use
- Efficient ultrasonic range finder function
- Wall-mounted charging station provides more convenient recharging process
- Can also be directly recharged via the charging port on the back of the lamp
- Mains 15v 1.5A multi-country charger included
- Carry case and safety glasses included

BATTERY 11.1v 5200mAh Li-ion
WEIGHT 900g (lamp only)
DIMENSIONS 159 x 223 x 77mm (lamp)

POWER 66W | RUNTIME 90MINS | CURING RANGE 5-20CM | IP RATING IP65/IK07



CRI-KIT | CRI DETAILING KIT

Comes complete with:-

- CASE-SML carry case
- EVA foam inserts
- CRI-2300 site light
- Quick-release mains charger/power lead with multi-country plug adaptors
- LARGE-MAGNET
- CRI-H200R headtorch



CASE WEIGHT 3550g | **CASE DIMENSIONS** 270 x 370 x 120mm



CRI-H200R | HIGH CRI SENSOR HEADTORCH

- 200 lumen high CRI 96+ COB LED
- 3 Colour Temperatures - CCT range: 2500K / 4500K / 6500K
- Sensor mode for hands-free operation
- Super tough construction with rubberised coating
- 60° rotational head
- Fully adjustable non-slip silicone headband included
- IP65 dust & water resistant
- IK07 Shock resistant
- Red-to-Green charging indicator
- Now faster 1A USB-C charging - quick 2.5 hours charge time
- 1m USB-C charging cable included

BATTERY 3.7v 1500mAh Li-Polymer
WEIGHT 110g
DIMENSIONS headtorch 48 x 79 x 46mm



CRI-2300 | HIGH CRI WORK LIGHT

- 2300 lumen 20W high CRI 96+ COB LED
- 5 Colour Temperatures - CCT range: 2700K / 3500K / 4500K / 5500K / 6500K
- Dual power - rechargeable & mains
- Memory function - remembers last colour used
- Super tough aluminium, nylon & TPR structure
- Built in aluminium heat sink
- 180° adjustable stand/handle with hole for attaching to tripod/magnet
- IP65 dust & water resistance
- IK07 shock resistance
- Battery level & charging indicators
- Mains 5M multi-country charger/power lead included
- Fast 3.5 hours charge time

BATTERY 11.1v 4400mAh Li-ion
WEIGHT 1150g
DIMENSIONS 224 x 199 x 74mm



LUMEN 200LM | **RUNTIME** 3H | **BEAM** 27M | **IP RATING** IP65/IK07

LUMEN 2300LM | **RUNTIME** 2-8H | **BEAM** 58M | **IP RATING** IP65/IK07



CRI-1900 | HIGH CRI WORK LIGHT

- 1900 lumen 15.6W high CRI 96+ COB LED
- 4 Colour Temperatures - CCT range: 2700K / 3500K / 4500K / 6500K
- Dual power - rechargeable and mains
- Memory function - remembers last colour setting used
- 2A USB power bank for charging devices
- Super tough nylon polymer construction
- Glow-in-the-Dark strip around reflector
- 210° Rotating stand with magnets & carabiner snap hook
- 180° Rotating handle with tripod hole
- Battery level & charging indicators
- Mains 15V 1.5A multi-country charger/power lead included
- Fast 3 hour charge time

BATTERY 7.4v 5000mAh Li-Ion
WEIGHT 750g
DIMENSIONS 188 x 164 x 78mm



CRI-3250 | HIGH CRI WORK LIGHT

- 3250 lumen 30W high CRI 96+ COB LED
- Multiple Colour Temperatures - CCT range: 2700k - 6500k
- Easy twist switch to change colour temperature
- Memory function - remembers last colour used
- Easy twist smooth dimming switch
- Dual power - rechargeable and mains
- 2A USB power bank for charging devices
- Super tough nylon & aluminium construction
- Built-in aluminium heat sinks
- Glow-in-the-Dark strip around reflector for extra visibility
- 170° Rotating stand with 4 strong magnets
- Adjustable head to change light angle
- Battery level & charging indicators
- Mains 15V 1.5A multi-country charger/power lead included

BATTERY 11.1v 5200mAh Li-ion
WEIGHT 1500g
DIMENSIONS 243 x 236 x 125mm



LUMEN 1900LM | **RUNTIME** 1.5-26H | **BEAM** 48M | **IP RATING** IP65

LUMEN 3250LM | **RUNTIME** 2-64H | **BEAM** 60M | **IP RATING** IP65



CRI-1650R | HIGH CRI COMPACT WORK LIGHT

- 1650 lumen 13.8W high CRI 96+ COB LED
- 4 Colour Temperatures - CCT range: 2700k / 3500k / 4500k / 6500k
- 4 x 395nm UV LEDs on the front
- Super tough nylon, TPR and aluminium construction
- Glow-in-the-Dark strip around LED for extra visibility
- Easy press rear switches for easy mode selection
- 180° Rotating stand with carabiner snap hook
- Threaded hole and strong magnets in the base
- Super high power 3.7v 13,500mAh li-ion battery
- Intelligent multiple USB-C charging inputs: 5V-3A / 9V-2A
- Multiple USB powerbank outputs: 5V-3A / 9V-2A / 12V-1A
- Battery level and charging indicators
- Faster 2A and 3A charging - 5.5 or 6 hours charge time
- 1m USB-C charging cable included

BATTERY 3.7v 13,500mAh Li-ion
WEIGHT 420g
DIMENSIONS 98 x 111 x 44.5mm



LUMEN 1650LM | **RUNTIME** 7.5-149H | **BEAM** 39M | **IP RATING** IPX5



CRI-1250R | HIGH CRI INSPECTION LIGHT

- 1250 lumen 10W high CRI 96+ COB LED
- 3 Colour Temperatures - CCT range: 2700k / 4500k / 6500k
- Press and hold smooth dimming function
- 250 Lumen 3W SMD LED flood beam top torch
- 5W UV LEDs on front (385nm)
- Built-in power bank for charging devices
- Super tough aluminium & polycarbonate structure
- Strong integral magnets on back & base
- Retractable 360° rotating hanging hook
- Glow-in-the-dark strip around LED
- Battery level & charging indicators
- Faster 2A USB-C charging - 5 hours charge time
- Magnetic charging dock & 1m USB-C charging cable included

BATTERY 3.7v 5000mAh Li-ion
WEIGHT 406g
DIMENSIONS 216 x 58 x 38mm



LUMEN 1250LM | **RUNTIME** 3-24H | **BEAM** 58M | **IP RATING** IP65/IK07



RA-700R | HIGH CRI RIGHT ANGLE LIGHT

- 700 lumen high CRI 96+ white COB LED, 6500k
- With red static & flashing modes
- 130° rotating head to angle the light output
- Super tough copolymer, TPR & aluminium construction
- Glow-in-the-dark strip around reflector for extra visibility
- Strong magnetic base
- Convenient magnetic charging station
- Detachable 140° rotating hanging hook
- IP65 dust & water resistant
- Battery level and charging indicator
- Faster 2A USB-C charging - 3 hour charge time
- 1m high quality USB-C cable included

BATTERY 3.7v 4500mAh Li-ion
WEIGHT 222g (light only) / 252g (with charging base)
DIMENSIONS folded 85 x 184 x 54mm
 extended 76 x 186 x 54mm



LUMEN 700LM | **RUNTIME** 3.5-180H | **BEAM** 31M | **IP RATING** IP65



CRI-700R | HIGH CRI COMPACT WORK LIGHT

- 700 lumen high CRI 96+ COB LED
- 3 Colour Temperatures - CCT range: 2700k / 4500k / 6500k
- Additional UV spot beam LED torch (395nm)
- 180° rotating handle/stand with carabiner snap hook
- Strong magnets within the stand
- Super tough copolymer and aluminium construction
- Glow-in-the-dark strip for extra visibility
- IPX5 water resistant
- Battery level and charging indicators
- Faster 2A USB-C charging - 3.5 hours charge time
- 1m high quality USB-C cable included

BATTERY 3.7v 5200mAh Li-ion
WEIGHT 320g
DIMENSIONS folded 55 x 130 x 48mm
 extended 55 x 240 x 40mm



LUMEN 700LM | **RUNTIME** 4.5-120H | **BEAM** 29M | **IP RATING** IPX5



SLR-500 | COMPACT WORK LIGHT

- 500 lumen white COB LED, 6500k
- With 300 lumen 6500k CREE LED top torch with 100m beam
- 180° rotating handle/stand with carabiner snap hook
- Strong magnets within the stand
- Super tough copolymer construction
- Glow-in-the-dark strip for extra visibility
- IPX5 water resistant
- Battery level and charging indicators
- Quick 1A USB-C charging - 3.5 hours charge time
- 1m high quality USB-C cable included
- Upgraded 'LG' 2600mAh battery for greater runtimes

BATTERY 3.7v 2600mAh Li-ion
WEIGHT 180g
DIMENSIONS folded 55 x 123 x 32mm
 extended 55 x 215 x 32mm

SLR-1000 | COMPACT WORK LIGHT

- 1000 lumen white COB LED, 6500k
- With 300 lumen 6500k CREE LED top torch with 100m beam
- 180° rotating handle/stand with carabiner snap hook
- Strong magnets within the stand
- Super tough copolymer and aluminium construction
- Glow-in-the-dark strip for extra visibility
- IPX5 water resistant
- Battery level and charging indicators
- Faster 2A USB-C charging - 3.5 hours charge time
- 1m high quality USB-C cable included
- Upgraded 'LG' batteries for greater longevity

BATTERY 3.7v 5200mAh Li-ion
WEIGHT 320g
DIMENSIONS folded 55 x 130 x 48mm
 extended 55 x 240 x 40mm

LUMEN 500LM | **RUNTIME** 4-97H | **BEAM** 24M | **IP RATING** IPX5

LUMEN 1000LM | **RUNTIME** 4-84H | **BEAM** 40M | **IP RATING** IPX5



SLR-1750 | WORK LIGHT WITH POWERBANK

- 1750 lumen white COB LED, 6500k
- Red LED modes for emergency / signalling / night vision
- Built-in USB power bank for charging devices
- 180° rotating handle/stand with carabiner snap hook
- Strong magnets within the stand
- Super tough copolymer and aluminium construction
- Glow-in-the-dark strip for extra visibility
- IPX5 water resistant
- Battery level and charging indicators
- 3A USB-C charging - 7 hours charge time
- 1m high quality USB-C cable (included)
- Upgraded 'LG' batteries for greater longevity

BATTERY 3.7v 10,400mAh Li-ion
WEIGHT 600g
DIMENSIONS folded - 102 x 158 x 55mm
 extended - 102 x 268 x 48mm

LUMEN 1750LM | **RUNTIME** 4.5-195H | **BEAM** 50M | **IP RATING** IPX5

SP-750 | COMPACT SPEAKER WORK LIGHT

- 750 lumen white COB LED, 6500k
- High quality 5W built-in bluetooth speaker
- With 300 lumen 6500k CREE LED top torch with 100m beam
- 180° rotating handle/stand with carabiner snap hook
- Strong magnets within the stand
- Super tough copolymer and aluminium construction
- Glow-in-the-dark strip for extra visibility
- IPX4 water resistant
- Battery level and charging indicators
- Faster 2A USB-C charging - 3.5 hours charge time
- 1m high quality USB-C cable (included)

BATTERY 3.7v 5200mAh Li-ion
WEIGHT 354g
DIMENSIONS folded - 55 x 130 x 60mm
 extended - 55 x 240 x 52mm

LUMEN 750LM | **RUNTIME** 4-154H | **BEAM** 36M | **IP RATING** IPX4



HX1500R | DUAL LED COMPACT WORK LIGHT

- 1500 lumen 15W white COB LED, 6500k
- Additional 500 lumen 5W SMD LED spot beam, 6500K
- Ultra tough nylon-polymer and aluminium construction
- 180° rotating stand with super strong magnetic base
- IP65 dust & water resistant
- IK07 shock proof - 2m drop resistant
- Operating temperature -20°C to +50°C
- Battery level and charging indicator lights
- Faster 2A USB-C charging - 4 hours charge time
- 1m high quality USB-C charging cable (included)

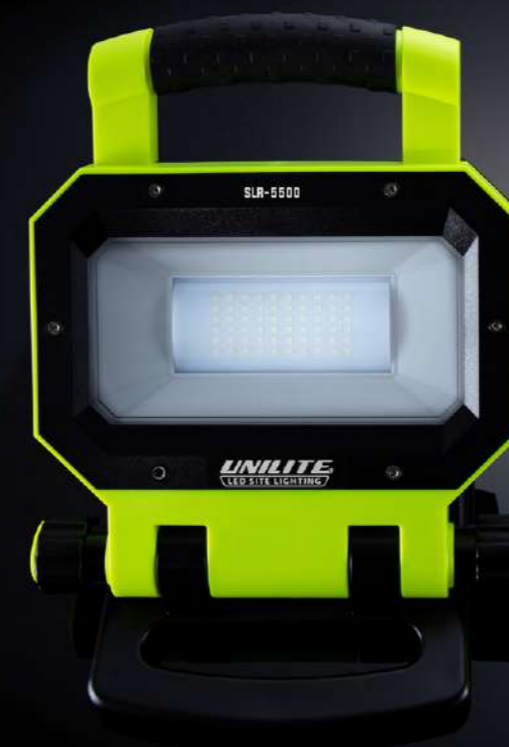
BATTERY 3.7v 5200mAh Li-ion
WEIGHT 400g
DIMENSIONS 116 x 101 x 41.5mm

HX-BL | EXTENDING MAGNETIC VEHICLE LIGHT BRACKET

- Ultra tough aluminium & nylon-polymer construction
- Central buckle clasp for locking into position
- 360° rotating plates at each end
- Super strong magnets within the plates
- Horizontal sliding plates with independent locks
- End hooks with rubberised coating to protect paintwork
- Extra long extending soft-close bar for larger vehicles
- Extends out to 2100 x 110 x 180mm
- Can be used under the bonnet and also inside the car for detailing work

LUMEN 1500LM | **RUNTIME** 2.5-10H | **BEAM** 48M | **IP RATING** IP65/IK07

WEIGHT 1300g | **DIMENSIONS** 850 x 110 x 180mm



SLR-3500 | RECHARGEABLE WORK LIGHT

- 3500 lumen 30W white SMD LEDs, 6500k
- Powerful 7.4v 6600mAh Li-ion battery
- Removable battery with powerful 2A USB power bank
- With battery level and charging indicators
- Tough aluminium & polycarbonate construction
- Glow-in-the-Dark strip around reflector for extra visibility
- Built-in aluminium heat sink
- Anti-slip rubber grip handle
- Adjustable head to change light angle
- Acrylic LED diffuser for even light dispersion
- Super strong magnetic base
- Mains multi-country 12V 2A charger/power lead included
- 4-5 hours charge time

BATTERY 7.4v 6600mAh Li-ion Battery Pack
WEIGHT 1880g
DIMENSIONS 215 x 192 x 285mm

LUMEN 3500LM | **RUNTIME** 3-6H | **BEAM** 31M | **IP RATING** IP54

SLR-5500 | RECHARGEABLE WORK LIGHT

- 5500 lumen 50W white SMD LEDs, 6500k
- High power 7.4v 7500mAh Li-ion battery
- Removable battery with powerful 2A USB power bank
- With battery level and charging indicators
- Tough aluminium & polycarbonate construction
- Glow-in-the-Dark strip around reflector for extra visibility
- Built-in aluminium heat sink
- Anti-slip rubber grip handle
- Adjustable head to change light angle
- Acrylic LED diffuser for even light dispersion
- Super strong magnetic base
- Mains 12V 2A multi-country charger/power lead included
- 4-5 hours charge time

BATTERY 7.4v 7500mAh Li-ion Battery Pack
WEIGHT 2200g
DIMENSIONS 215 x 192 x 285mm

LUMEN 5500LM | **RUNTIME** 3-6H | **BEAM** 54M | **IP RATING** IP54



SLR-4400 | DUAL POWER WORK LIGHT

- 4400 lumen 50W white COB LED, 6500k
- Dual Power - rechargeable battery and mains powered
- Super tough IK07 aluminium & TPR construction
- Built-in aluminium heat sink
- 180° Vertical adjustable stand/handle
- Tripod & magnet mountable via hole in stand
- IP65 dust & water resistant
- Powerful 11.1v 5200mAh integrated li-ion battery
- Battery level and charging indicators
- Mains 15V 1.5A multi-country charger/power lead included
- Quick 4 hour charge time
- Magnet attachment and tripods available to purchase separately

BATTERY 11.1v 5200mAh Li-ion
WEIGHT 1150g
DIMENSIONS 225 x 220 x 70mm

SLR-6000 | DUAL POWER WORK LIGHT

- 6000 lumen 65W white COB LED, 6500k
- Dual Power - rechargeable battery and mains powered
- 1A USB Powerbank for charging devices
- Super tough IK07 aluminium & TPR construction
- Built-in aluminium heat sink
- 180° Vertical adjustable stand/handle
- IP65 dust & water resistant
- Tripod & magnet mountable via hole in stand
- Powerful 11.1v 5200mAh integrated li-ion battery
- Battery level and charging indicators
- Mains 15V 1.5A multi-country charger/power lead included
- Quick 4 hour charge time
- Magnet attachment and tripods available to purchase separately

BATTERY 11.1v 5200mAh Li-ion
WEIGHT 1355g
DIMENSIONS 266 x 237 x 59mm

LUMEN 4400LM | **RUNTIME** 2-9H | **BEAM** 74M | **IP RATING** IP65/IK07

LUMEN 6000LM | **RUNTIME** 1-6H | **BEAM** 89M | **IP RATING** IP65/IK07



SP-4500 | BLUETOOTH SPEAKER WORK LIGHT

- 4500 lumen 45W white COB LED, 6500K
- High quality integrated 10W Bluetooth speaker
- Dual Power - rechargeable battery and mains powered
- 1A USB Powerbank for charging devices
- Ultra tough nylon-polymer construction
- Concealed 360° rotating aluminium hanging hook
- 140° vertical adjustable body to angle light
- IP65 dust & water resistant
- IK07 shock proof - 2m drop resistant
- High power 11.1v 5200mAh Li-ion battery
- Battery level and charging indicators
- Mains 15V 1.5A multi-country charger/power lead included
- Fast 3.5 hours charge time
- Optional extra magnet and tripods available

BATTERY 11.1v 5200mAh Li-ion
WEIGHT 1560g
DIMENSIONS 210 x 210 x 100mm

RL-5250 | INDUSTRIAL 360° LED LANTERN

- 5250 lumen 50W 160 x SMD LEDs, 6500k
- Dual Power - rechargeable battery and mains powered
- 360° and 180° Lighting modes
- Ultra tough nylon polymer construction
- Milky polycarbonate diffuser for even light dispersion
- Stainless steel carry handle on the top
- Concealed ultra tough hanging hook in the base
- Screw hole in the base for attaching to tripods
- IP65 dust & water proof
- IK07 shock resistant
- High power 11.1v 5200mAh Li-ion battery
- Battery level and charging indicators
- Mains 15V 1.5A multi-country charger/power lead included
- Fast 3.5 hours charge time

BATTERY 11.1v 5200mAh Li-ion
WEIGHT 1820g
DIMENSIONS Ø157.5 x H 285.6 mm

LUMEN 4500LM | **RUNTIME** 3.5-15H | **BEAM** 74M | **IP RATING** IP65/IK07

LUMEN 5250LM | **RUNTIME** 2-16H | **BEAM** 44M | **IP RATING** IP65/IK07



CT-2 | FOLDING COMPACT WORK LIGHT

- 250 lumen white SMD LEDs, 6500k
- Additional 100 lumen top torch
- 22 metre torch beam range
- 360° Rotating magnetic stand
- Retractable 360° rotating hanging hook
- Belt clip attachment
- IP20 dust resistant
- IK07 shock resistant

BATTERY 3 x 1.5v AAA Alkaline Batteries (inc.)
WEIGHT 170g (without batteries)
DIMENSIONS 127 x 65.5 x 28mm

PL-3 | INSPECTION PENLIGHT

- 275 lumen white SMD LEDs, 6500k
- Die cast aircraft grade aluminium construction
- Easy press rubberised micro-switch
- 3 Light mode settings
- Strong magnetic base
- Useful rear aluminium pocket clip
- IPX4 water resistant
- 1m drop resistant

BATTERY 3 x 1.5v AAA Alkaline Batteries (inc.)
WEIGHT 57g (without batteries)
DIMENSIONS 154 x 15 x 21.5mm

LUMEN 250LM | **RUNTIME** 4-12H | **BEAM** 22M | **IP RATING** IP20/IK07

LUMEN 275LM | **RUNTIME** 3-16H | **BEAM** 23M | **IP RATING** IPX4



IL-175R | FOLDING INSPECTION LIGHT

- 175 lumen white COB LED, 6500k
- Secondary rear 150 lumen white COB LED, 6500k
- Extra top torch - 70 lumen SMD LED, 6500k
- Ultra lightweight compact pocket size
- 180° vertical folding head
- Super tough IK07 nylon polymer and aluminium construction
- Useful pocket clip
- Strong magnetic base and dual rear magnets
- High quality 350mAh li-ion battery
- Quick 1A USB-C charging - 2.5 hours charge time
- 1m high quality USB-C cable included

BATTERY 3.7v 350mAh Li-ion
WEIGHT 60g
DIMENSIONS folded 111.5 x 19.2 mm
 extended 225 x 19.2 mm

LUMEN 175LM | **RUNTIME** 3-6H | **BEAM** 21M | **IP RATING** IP20/IK07

IL-375R | FOLDING INSPECTION LIGHT

- 375 lumen white COB LED, 6500k
- Secondary rear 250 lumen white COB LED, 6500k
- Extra top torch - 100 lumen SMD LED, 6500k
- Ultra lightweight compact pocket size
- 180° vertical folding head
- Super tough IK07 nylon polymer and aluminium construction
- Useful pocket clip
- Strong magnetic base and dual rear magnets
- High quality 1100mAh li-ion battery
- Quick 1A USB-C charging - 3 hour charge time
- 1m high quality USB-C cable included

BATTERY 3.7v 1100mAh Li-ion
WEIGHT 80.8g
DIMENSIONS folded 156 x 33 x 20.6 mm
 extended 298 x 26 x 20.6 mm

LUMEN 375LM | **RUNTIME** 3-6H | **BEAM** 26M | **IP RATING** IP54/IK07



IL-925R | FOLDING INSPECTION LIGHT

- 925 lumen white COB LED, 6500k
- Secondary rear 475 lumen white COB LED, 6500k
- Extra top torch - 150 lumen SMD LED, 6500k
- Compact hand-held size
- Super tough aluminium & nylon construction
- 180° vertical folding head
- Super strong magnetic base
- IK07 shock resistant - 2m drop resistant
- IP54 dust & water resistant
- High quality 2600mAh li-ion battery
- Battery level & charging indicators
- Fast 1A USB-C charging - 4 hour charge time
- 1m high quality USB-C cable included

BATTERY 3.7v 2600mAh Li-ion
WEIGHT 193g
DIMENSIONS folded 162 x 40 x 29 mm
 extended 304 x 33 x 29 mm

LUMEN 925LM | **RUNTIME** 2.5-9H | **BEAM** 41M | **IP RATING** IP54/IK07



IL-625R | INSPECTION LIGHT

- 625 lumen white 5W COB LED, 6500k
- 250 lumen white 3W SMD LED spot beam torch, 6500k
- 395nm UV LED on front
- Super tough aluminium & polycarbonate
- Rear magnetic pocket clip
- Strong integral magnets on back & base
- Glow-in-the-dark strip around LED
- Battery level & charging indicators
- High power 3.7v 2500mAh Li-ion battery
- Quick 1A USB-C charging - 3 hours charge time
- 1m USB-C charging cable included

BATTERY 3.7v 2500mAh Li-ion
WEIGHT 190g
DIMENSIONS 188 x 35 x 35mm

LUMEN 625LM | **RUNTIME** 3-12H | **BEAM** 46M | **IP RATING** IP65/IK07



IL-SIG1 | SIGNALLING INSPECTION LIGHT

- 1100 lumen white 10W SMD LEDs, 6500k
- Red / Amber / Green SMD LEDs for signalling
- Coloured LEDs have static and 2Hz flashing functions
- 4 Independent switches for easy operation
- Additional 220 lumen white 6500k SMD LED top torch
- Super tough aluminium & polycarbonate construction
- Built-in aluminium heat sink on the back
- Integral rotating hanging hook with magnets
- Multi-positional fold-out kick stand/hook
- IP54 dust and water resistant
- Red-to-Green charging indicator LED
- 1m high quality DC-USB charging cable included

BATTERY 3.7v 4400mAh Li-ion
WEIGHT 334g
DIMENSIONS 205 x 60 x 42mm

LUMEN 1100LM | **RUNTIME** 3.5-30H | **BEAM** 61M | **IP RATING** IP54



PS-HDL2 | HELMET HEADTORCH

- 200 lumen white CREE LED, 6500k
- 4 main functions - HIGH / MED / LOW / SOS FLASHING
- 3 auxiliary function - HIGH / LOW / STROBE FLASHING
- Easy push micro switch
- Ultra-smooth reflector for long distance beamt
- 45° rotational head
- Strong ABS housing
- Fully adjustable non-slip silicone headband
- 3M VHB adhesive helmet mount (included)
- 1m impact resistant
- IPX6 water resistant

BATTERY 3 x 1.5v AAA Energizer Alkaline Batteries (inc.)
WEIGHT 88g (with batteries)
DIMENSIONS headtorch 47 x 62 x 37mm

LUMEN 200LM | **RUNTIME** 5-185H | **BEAM** 95M | **IP RATING** IPX6



HL-4R | USB HELMET HEADTORCH

- 275 lumen white CREE LED, 6500k
- 2 x 5mm red LEDs for night vision - ON and FLASHING
- Red-to-Green charging indicator
- Easy push micro switch
- 45° rotational head
- Strong ABS housing
- Fully adjustable non-slip silicone headband
- 3M VHB adhesive helmet mount (included)
- 1m impact resistant
- Now Faster 1A USB-C charging - 2.5 hour charge time
- 1m USB-C charging cable included

BATTERY 3.7v 1800mAh Li-Polymer
WEIGHT 78g
DIMENSIONS headtorch 63 x 40 x 42mm

LUMEN 275LM | **RUNTIME** 6.5-170H | **BEAM** 95M | **IP RATING** IPX5



HL-5R | SENSOR HEADTORCH

- 325 lumen white COB LED, 6500k
- Sensor mode for hands-free operation
- Super tough construction with rubberised coating
- 60° rotational head
- Fully adjustable non-slip silicone headband included
- IP65 dust & water resistant
- IK07 Shock resistant
- Impact resistant to 1m
- Red-to-Green charging indicator
- Now faster 1A USB-C charging - quick 2.5 hours charge time
- 1m USB-C charging cable included

BATTERY 3.7v 1500mAh Li-Polymer
WEIGHT 110g
DIMENSIONS headtorch 48 x 79 x 46mm

PS-HDL6R | DUAL POWER HELMET HEADTORCH

- 350 lumen white SMD LEDs, 6500k
- Network Rail Approved
- Dual power - runs off rechargeable lithium battery or 3 x AAA alkaline batteries
- 3M VHB adhesive helmet mount (included)
- Easy push micro switch
- Anti-dazzle retractable light shield
- 45° rotational head
- Fully adjustable non-slip silicone headband
- 3 x AAA battery cartridge included
- Battery level & charging indicator
- 1A USB-C charging - 4 hour charge time
- 1m USB-C charging cable included

BATTERY 3.7v 1800mAh Li-Polymer (inc.) / 3 x AAA Battery Cartridge (batteries not included)
WEIGHT 86g (with lithium battery) / 94g (with 3 x AAA batteries)
DIMENSIONS headtorch 50 x 65 x 45mm

LUMEN 325LM | **RUNTIME** 2-5.5H | **BEAM** 38M | **IP RATING** IP65/IK07

LUMEN 350LM | **RUNTIME** 2-59H | **BEAM** 27M | **IP RATING** IPX6



HT-450 | DUAL LED HEADTORCH

- 450 lumen white CREE LED, 6500k
- With diffuser for wide flood lighting
- Additional 250 lumen white CREE LED spot beam, 6500k
- With collimator lens for long distance beam
- 3 x AAA Alkaline batteries included
- Adjustable non-slip silicone lined headband included
- 60° rotational head
- IP65 dust & water resistant
- IK07 shock proof
- 2m Drop resistant

BATTERY 3 x 1.5v AAA Alkaline Batteries (Included)
WEIGHT 82g
DIMENSIONS headtorch 46.3 x 68.7 x 35.9mm

LUMEN 450LM | **RUNTIME** 3.5-30H | **BEAM** 134M | **IP RATING** IP65/IK07



HL-6R | DUAL POWER DUAL LED HEADTORCH

- 450 lumen white dual CREE LEDs, 6500k
- Multiple spot beam & floodlight settings
- Dual power - rechargeable & 2 x AA options
- SOS emergency & 2Hz safety flash functions
- High power 2600mAh Li-ion battery (included)
- Super tough construction with top quality cables
- 45° rotational head
- Fully adjustable non-slip silicone headbands included
- Presented in wet suit zip pouch
- Now Faster 1A USB-C charging - 3 hour charge time
- 1m USB-C charging cable included

BATTERY 1 x 3.7v 2600mAh 18650 Li-ion (inc.) / or 2 x AA Alkaline Batteries (not included)
WEIGHT 141g (without batteries)
DIMENSIONS headtorch 50 x 47 x 38mm / battery pack 42 x 85 x 40mm

LUMEN 450LM | **RUNTIME** 4.5-96H | **BEAM** 129M | **IP RATING** IPX6



HL-7R | DUAL BEAM SENSOR HELMET HEADTORCH

- 475 lumen white CREE LED, 6500k
- 2 x Side SMD LEDs for wide flood lighting
- Sensor mode for hands-free operation
- Super tough construction with side heat sinks
- 45° rotational head
- 1m impact resistant
- Fully adjustable non-slip silicone headband
- 3M VHB adhesive helmet mount (included)
- Quick 1A USB-C charging - 2.5 hour charge time
- Battery level & charging indicator
- 1m USB-C charging cable included

BATTERY 3.7v 1800mAh Li-Polymer
WEIGHT 94g
DIMENSIONS headtorch 33 x 60 x 42mm

HL-8R | DUAL BEAM SENSOR HEADTORCH

- 475 lumen white SMD LEDs, 6500k
- 2 x Side SMD LEDs for wide flood lighting
- 250 lumen SMD LED for long distance spot beam
- Sensor mode for hands-free operation
- Super tough construction with rubberised coating
- IK07 shock resistant
- IP65 dust & water resistant
- 1m impact resistant
- 60° rotational head
- Fully adjustable non-slip silicone lined headband
- Red-to-Green charging indicator light
- Fast 1A USB-C rechargeable - 2.5 hours charge time
- 1m USB-C charging cable included

BATTERY 3.7v 1500mAh Li-Polymer
WEIGHT 111g
DIMENSIONS headtorch 47.5 x 78.5 x 46mm

LUMEN 475LM | **RUNTIME** 2-7.5H | **BEAM** 100M | **IP RATING** IPX5

LUMEN 475LM | **RUNTIME** 4-35H | **BEAM** 90M | **IP RATING** IP65/IK07



HT-650R | DUAL POWER DUAL LED HEADTORCH

- 650 lumen white COB LED, 6500k
- Circular COB LED for wide flood lighting
- Additional 450 lumen CREE LED spot beam, 6500K
- Dual Power - rechargeable or 3 x AAA batteries
- Super tough construction with rubberised coating
- Fully adjustable non-slip silicone lined headband
- 60° rotational head
- IP65 dust & water resistant
- IK07 shock proof - 2m drop resistant
- Rechargeable 3.8v Li-Po battery included
- Red-to-Green charging indicator on battery
- Quick 3.5 hour USB-C charge time
- 1m USB-C charging cable included

BATTERY 3.8v 1100mAh Li-Polymer Battery or 3 x 1.5v AAA Alkaline Batteries (not included)
WEIGHT 89g
DIMENSIONS headtorch 46.3 x 68.7 x 40mm

LUMEN 650LM | **RUNTIME** 2-30H | **BEAM** 84M | **IP RATING** IP65/IK07



PS-HDL9R | INDUSTRIAL HIGH POWER HEADTORCH

- 750 lumen white CREE LED, 6500k
- Red rear battery pack light (ON & FLASH)
- Parallel circuitry - runs off 1 or 2 batteries
- Anti-dazzle retractable light shield
- Wider angle light spread
- Easy twist smooth dimming power switch
- 45° rotational head
- Super tough construction with top quality cables
- Fully adjustable non-slip silicone headbands
- Presented in hard zipped storage case
- Now faster 2A USB-C charging - 3.5 hours charge time
- Useful battery level and charging indicators
- 1m USB-C charging cable included

BATTERY 2 x 3.7v 2000mAh 18650 Li-ion (inc.)
WEIGHT 275g (with 2 batteries)
DIMENSIONS headtorch 38 x 60 x 45mm / battery pack 65 x 90 x 45mm

LUMEN 750LM | **RUNTIME** 4-260H | **BEAM** 100M | **IP RATING** IPX6



RAIL-HDL9R | INDUSTRIAL HIGH POWER HEADTORCH

- 750 lumen white CREE LED, 6500k
- Network Rail Approved
- Parallel circuitry - runs off 1 or 2 batteries
- Anti-dazzle retractable light shield
- Wider angle light spread
- Easy twist smooth dimming power switch
- 45° rotational head
- Super tough construction with top quality cables
- Fully adjustable non-slip silicone headbands
- Presented in hard zipped storage case
- Now faster 2A USB-C charging - 3.5 hours charge time
- Useful battery level and charging indicators
- 1m USB-C charging cable included

BATTERY 2 x 3.7v 2000mAh 18650 Li-ion (inc.)
WEIGHT 275g (with 2 batteries)
DIMENSIONS headtorch 38 x 60 x 45mm / battery pack 53 x 90 x 45 mm

LUMEN 750LM | **RUNTIME** 4-260H | **BEAM** 100M | **IP RATING** IPX6

HL-11R | INDUSTRIAL SUPER BRIGHT HEADTORCH

- 1100 lumen white CREE LED, 6500k
- Easy twist smooth dimming switch
- Retractable shield to provide spot & flood beams
- Fully adjustable non-slip silicone headbands
- 2 x High power 2600mAh Li-ion batteries included
- Parallel circuitry (works with 1 or 2 batteries)
- Super tough construction with top quality cables
- Useful battery level and charging indicators
- 45° rotational head
- Faster 2A USB-C charging - 4.5 hours charge time
- 1m USB-C charging cable included
- Presented in hard zipped storage case

BATTERY 2 x 3.7v 2600mAh 18650 Li-ion (inc.)
WEIGHT 275g (with 2 batteries)
DIMENSIONS headtorch 38 x 60 x 45mm / battery pack 53 x 90 x 45mm

LUMEN 1100LM | **RUNTIME** 4-148H | **BEAM** 167M | **IP RATING** IPX6



TL-5 | INDUSTRIAL IP68 FLASHLIGHT

- 500 lumen white Luxeon LED, 6500k
- Industrial corrosion resistant co-polymer body
- Aircraft grade aluminium head
- Ultra smooth reflector for long distance beam
- Soft & hard touch switch for easy mode selection
- IP68 dust & waterproof - 2m submersible (30 mins)
- 2m drop resistant
- Built-in pocket clip & safety wrist strap (included)

BATTERY 2 x 1.5v AA Duracell Alkaline Batteries (inc.)
WEIGHT 74g (with batteries)
DIMENSIONS 155 x 30 x 30mm

LUMEN 500LM | **RUNTIME** 4.5-35H | **BEAM** 177M | **IP RATING** IP68



PT-2 | ALUMINIUM PENLIGHT

- 275 lumen white CREE LED, 6500k
- Hard anodized die cast matte aluminium body
- Tactical rubberised micro switch operation
- 2 light mode settings
- Flawless smooth reflector for long distance beam
- Convenient battery replacement - 2 x AAA Alkaline
- IP66 dust and waterproof
- Impact resistant to 1m
- Convenient detachable pocket clip

BATTERY 2 x 1.5v AAA Duracell Alkaline Batteries (inc.)
WEIGHT 65g (with batteries)
DIMENSIONS 137 x 18 x 25mm

FL-2 | ALUMINIUM FLASHLIGHT

- 220 lumen white CREE LED, 6500k
- Hard anodized die cast matte aluminium body
- Tactical rubberised micro switch operation
- 3 light mode settings and 8Hz defence strobe
- New multi-faceted reflector for long distance beam
- Convenient battery replacement - 1 x AA Alkaline
- IP67 dust and waterproof - 1m submersible
- Impact resistant to 1m
- Nylon velcro holster & safety nylon wrist strap (included)

BATTERY 1 x 1.5v AA Duracell Alkaline Battery (inc.)
WEIGHT 94g (with battery)
DIMENSIONS 109 x 28 x 28mm

LUMEN 275LM | **RUNTIME** 1.5-15H | **BEAM** 90M | **IP RATING** IP66

LUMEN 220LM | **RUNTIME** 2-18H | **BEAM** 117M | **IP RATING** IP67



FL-4R | ALUMINIUM USB FLASHLIGHT

- 450 lumen white CREE LED, 6500k
- Hard anodized die cast matte aluminium body
- Tactical rubberised micro switch operation
- 3 light mode settings and 8Hz defence strobe
- Flawless smooth reflector for long distance beam
- IP67 dust and waterproof - 1m submersible
- Impact resistant to 1m
- Built-in USB rubberised charging port cover
- Battery level and charging indicator LED
- Now 1A USB-C charging - 2 hours charge time
- 1m high quality micro-USB charging cable included
- Nylon velcro holster & safety nylon wrist strap included

BATTERY 3.7v 800mAh 14500 Li-ion (inc.)
WEIGHT 109g (with battery)
DIMENSIONS 113 x 30 x 30mm

FL-11R | ALUMINIUM USB FLASHLIGHT

- 1100 lumen white CREE LED, 6500k
- Hard anodized die cast matte aluminium body
- Tactical rubberised micro switch operation
- 3 light mode settings and 8Hz defence strobe
- Flawless smooth reflector for long distance beam
- IP67 dust and waterproof - 1m submersible
- Impact resistant to 1m
- Built-in USB rubberised charging port cover
- Battery level and charging indicator LED
- Now faster 2.1A USB-C charging - 2.5 hours charge time
- High quality USB-C charging cable included
- Nylon velcro holster & safety nylon wrist strap included

BATTERY 3.7v 2600mAh 18650 Li-ion (inc.)
WEIGHT 229g (with battery)
DIMENSIONS 139 x 38 x 38mm

LUMEN 450LM | **RUNTIME** 2-20H | **BEAM** 210M | **IP RATING** IP67

LUMEN 1100LM | **RUNTIME** 4.5-80H | **BEAM** 270M | **IP RATING** IP67



ATEX-PL1 | ZONE 0 INTRINSICALLY SAFE PENLIGHT

- 65 lumen white CREE LED, 6500k
- ATEX Zone 0 gas compliant
- Safety release valve to release hydrogen gases
- Chemical and corrosion resistant
- Durable rubberised head and body
- Strong ABS housing with durable synthetic rubber coating
- Convenient pocket clip
- Safety locking battery compartment
- Easy press switch ON/OFF operation
- IP67 dust and waterproof
- 1m submersible

BATTERY 2 x 1.5v AAA Alkaline Batteries (not inc.)
WEIGHT 41g (without batteries)
DIMENSIONS 142 x 30 x 26mm



LUMEN 65LM | **RUNTIME** 20.5H | **BEAM** 41M | **IP RATING** IP67

ATEX-FL4 | ZONE 0 INTRINSICALLY SAFE FLASHLIGHT

- 150 lumen white CREE LED, 6500k
- ATEX Zone 0 gas compliant
- Safety release valve to release hydrogen gases
- Chemical and corrosion resistant
- Rubberised head & handle for greater durability
- Industrial strength polycarbonate housing
- Detachable pocket clip included for hands free use
- Safety locking battery compartment
- Polycarbonate lens and smooth reflector for long distance beam
- Optional brackets available for helmets
- IP67 dust and waterproof
- 3m submersible

BATTERY 4 x 1.5v AA Alkaline Batteries (not inc.)
WEIGHT 115g (without batteries)
DIMENSIONS 174 x 47 x 47mm



LUMEN 150LM | **RUNTIME** 6-69H | **BEAM** 235M | **IP RATING** IP67



ATEX-RA2 | ZONE 0 INTRINSICALLY SAFE RIGHT ANGLE TORCH

- 350 lumen white CREE LED, 6500k
- ATEX Zone 0 gas compliant
- Suitable for mining
- Safety release valve to release hydrogen gases
- Chemical and corrosion resistant
- Rubberised head and grips for durability
- Ultra strength polycarbonate housing
- Convenient rear stainless steel pocket clip
- Safety locking battery compartment
- Easy push micro switch operation
- IP54 dust and water resistant

BATTERY 4 x 1.5v AA Alkaline Batteries (not inc.)
WEIGHT 250g (without batteries)
DIMENSIONS 183 x 69 x 63mm



ATEX-H2 | ZONE 0 INTRINSICALLY SAFE HEADTORCH

- 225 lumen white CREE LED, 6500k
- ATEX Zone 0 gas compliant
- Safety release valve to release hydrogen gases
- Strong ABS housing with durable synthetic rubber coating
- Safety locking battery compartment
- Easy press rubberised switch
- 2 mode light settings
- 90° rotational head
- Silicone lined non-slip headband included
- IP67 dust and waterproof
- 1m submersible

BATTERY 3 x 1.5v AAA Alkaline Batteries (not inc.)
WEIGHT 130g (without batteries)
DIMENSIONS headtorch 80 x 50 x 45mm



LUMEN 350LM | **RUNTIME** 6.5-13H | **BEAM** 288M | **IP RATING** IP54

LUMEN 225LM | **RUNTIME** 5-12H | **BEAM** 115M | **IP RATING** IP67



UR4.5 | UNILITE ROGUE 4.5 TOOL BAG

- High performance fabric with industrial nylon stitching for enhanced durability
- Free standing polypropylene waterproof base
- 2 x magnetic Fidlock buckles for super quick open/closure
- 2 x magnetic Fidlock buckles on the shoulder straps for extra support
- High visibility yellow and reflective fabrics for added safety and visibility
- Multiple storage compartments inside & outside
- Neoprene Velcro straps for holding gas bottle or spirit level
- Hard shell EVA zipped pouch on the front
- Ergonomic rubberised top carry handle
- Thermoformed comfort back panel
- 1200D water resistant outer material
- Removable & rechargeable 150 lumen USB LED light included

WEIGHT 3750g
DIMENSIONS 440 x 280 x 215mm

LUMEN 150LM | RUNTIME 2.5-6.5H | BEAM 13M | IP RATING IPX5



UR4.5-POUCH | SET OF 2 ORGANISER POUCHES

- Set of two pouches – 220x170mm & 190x155mm
- High performance fabric with industrial nylon stitching for enhanced durability
- Carabiner snap hooks for easy attachment
- Reinforced viewing windows
- High visibility yellow design with added reflective banding
- YKK Zippers for added durability

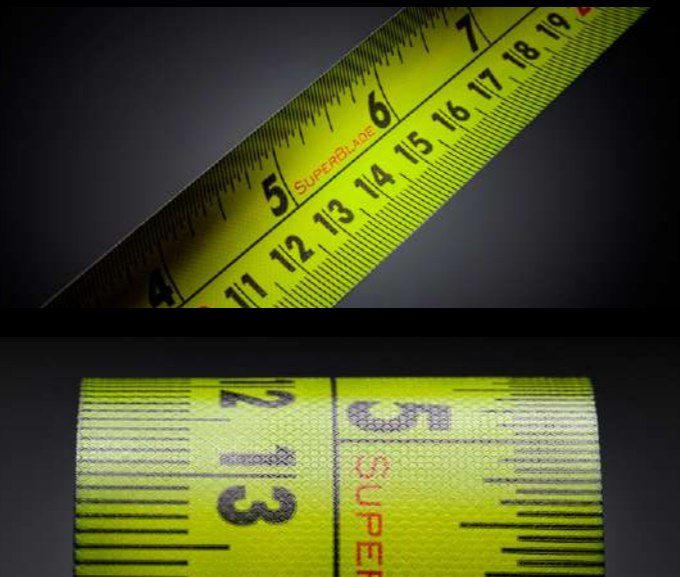
2 SIZES INCLUDED 220 x 170mm & 190 x 155mm



MT5M1 | HEAVY DUTY TAPE MEASURE

- Heavy duty 5m tape measure with 19mm wide blade
- High performance nylon coated blade
- 1.8m/6ft high stand-out blade
- Double riveted carbon steel hook
- Dual colour double sided imperial & metric blade
- Powerful push lock secures the blade
- Superior internal mechanism provides smooth operation
- Durable rear pocket clip - wont detach even if screw loosens
- Impact resistant TPR covered ABS casing
- Drop tested from 1.5m

WEIGHT 179g | **DIMENSIONS** H 69.5 x W 71 x D 41mm



MT5M2 | HEAVY DUTY TAPE MEASURE

- Heavy duty 5m tape measure with 27mm wide blade
- Ultra high performance nylon coated SUPERBLADE - 5 x extended life
- 2.9m/9.5ft high stand-out blade
- SUPERBLADE withstands durability tests of falling sand particles with 60 litres of salt spray for 100 hours
- Magnetic triple riveted stainless steel dual hook with 1kg suction
- Dual colour double sided imperial & metric blade
- Durable rear pocket clip - wont detach even if screw loosens
- Powerful push lock secures the blade
- Superior internal mechanism provides smooth operation
- Impact resistant TPR covered ABS casing
- Drop tested from 9m

MT8M3 | SUPER HEAVY DUTY TAPE MEASURE

- Super heavy duty 8m tape measure with 32mm wide blade
- Ultra high performance nylon coated SUPERBLADE - 5 x extended life
- 4m/13ft high stand-out blade
- SUPERBLADE withstands durability tests of falling sand particles with 60 litres of salt spray for 100 hours
- Magnetic triple riveted stainless steel dual hook with 1kg suction
- Dual colour double sided imperial & metric blade
- Durable rear pocket clip - wont detach even if screw loosens
- Powerful push lock secures the blade
- Superior internal mechanism provides smooth operation
- Impact resistant TPR covered ABS casing
- Drop tested 12 times from 3m

WEIGHT 322g | **DIMENSIONS** H 76.5 x W 79 x D 51.8mm

WEIGHT 603g | **DIMENSIONS** H 90 x W 90 x D 59mm



GLASSES-KIT | SAFETY GLASSES ACCESSORIES KIT

The perfect accessory for our range of Unilite safety glasses.

Built tough to protect your safety glasses, this kit includes a hard-shell EVA foam zip case made from ultra tough material, a micro-fibre cloth & a neoprene neck strap to keep your safety glasses secure.

Kit Includes:

- Hard shell EVA foam zip case with carabiner hook
- Micro-fibre cloth
- Neoprene neck strap

KIT WEIGHT 72g | **ZIP CASE DIMENSIONS** 170 x 68 x 82.5mm



SG-YCB | SAFETY GLASSES WITH CLEAR BLUE LIGHT LENSES

- Tough flexible polycarbonate frame
- 8-Base curved toughened polycarbonate lenses
- Clear 420Cut blue light blocking lenses
- Blocks harmful HEV blue light up to 420nm
- K & N anti-scratch & anti-fog lens coatings
- 99% UV A/B/C protection (EN170)
- Flexible PC & TPR co-injected side arms
- Adjustable rubberised non-slip nose pads
- Reinforced nose bridge
- Micro-fibre drawstring storage bag included

LENS MARKINGS

- Lens Filters: 2C (UV EN170) 1.2 (Clear)
- Optical Class: 1 (high optical quality)
- Lens Coatings: Anti-Scratch - K Anti-Fog - N
- Mechanical risk: Low energy impact - F
- High speed particles at extreme temperatures - T

WEIGHT 28.5g



CERTIFICATIONS CE - EN166 / USA - ANSI Z87.1 / AUS/NZ - AS/NZS 1337.1

SG-YDS | SAFETY GLASSES WITH DARK SMOKE LENSES

- Tough flexible polycarbonate frame
- 8-Base curved toughened polycarbonate lenses
- Dark smoke lens tinting
- K & N anti-scratch & anti-fog lens coatings
- 99% UV A/B/C protection (EN172)
- Flexible PC & TPR co-injected side arms
- Side temple ventilation
- Adjustable rubberised non-slip nose pads
- Reinforced nose bridge
- Micro-fibre drawstring storage bag included

LENS MARKINGS

- Lens Filters: 5 (UV EN172) 2.5 (Dark Smoke)
- Optical Class: 1 (high optical quality)
- Lens Coatings: Anti-Scratch - K Anti-Fog - N
- Mechanical risk: Low energy impact - F
- High speed particles at extreme temperatures - T

WEIGHT 28g



CERTIFICATIONS CE - EN166 / USA - ANSI Z87.1 / AUS/NZ - AS/NZS 1337.1



SG-Y10 | SAFETY GLASSES WITH INDOOR/OUTDOOR LENSES

- Super tough flexible nylon-polymer frame
- 8-Base curved toughened polycarbonate lenses
- Toughened polycarbonate lenses
- Indoor & outdoor mirror lens coating
- With 99% UV A/B/C protection (EN170)
- Anti-scratch & anti-fog lens coatings
- Flexible PC & TPR co-injected side arms
- Rubberised TPR inner arm grips
- TPR non-slip nose grip with reinforced bridge
- Side TPR temple shields with ventilation
- Micro-fibre drawstring storage bag included

LENS MARKINGS

- Lens Filters: 2 (UV EN170) 1.4 (Indoor & Outdoor)
- Optical Class: 1 (high optical quality)
- Lens Coatings: Standard Anti-Scratch & Anti-Fog
- Mechanical risk - Low energy impact - F
- High speed particles at extreme temperatures - T

WEIGHT 33.5g



SG-YFG | SAFETY GLASSES WITH CLEAR LENSES & FOAM GASKET

- Tough flexible polycarbonate frame
- 8-Base curved toughened polycarbonate clear lenses
- Hytrel black back frame with EVA foam gasket
- K & N anti-scratch & anti-fog lens coatings
- 99% UV A/B/C protection (EN170)
- Flexible PC & TPR co-injected side arms
- With side temple ventilation
- Adjustable TPR non-slip nose pads
- Reinforced nose bridge
- Micro-fibre drawstring storage bag included

LENS MARKINGS

- Lens Filters: 2C (UV EN170) 1.2 (Clear)
- Optical Class: 1 (high optical quality)
- Lens Coatings: Anti-Scratch - K Anti-Fog - N
- Mechanical risk: Low energy impact - F
- High speed particles at extreme temperatures - T

WEIGHT 39.5g



CERTIFICATIONS CE - EN166 / USA - ANSI Z87.1 / AUS/NZ - AS/NZS 1337.1

CERTIFICATIONS CE - EN166 / USA - ANSI Z87.1 / AUS/NZ - AS/NZS 1337.1



HARD CASES | WATERPROOF HARD CASES

Industrial IP67 waterproof hard cases built with ultra tough yet lightweight polypropylene. Featuring pressure release valves, robust quick release clasps for secure locking, and sturdy TPR handle grips for easy carrying. Come with pick and pluck foam as standard. Sticker packs and padlocks can be purchased.

CODE	CASE DIMENSIONS	INTERNAL DIMS.	VOLUME	WEIGHT
UC2411	304 x 248 x 120mm	240 x 190 x 106mm	4.8 litres	1.4kg
UC2419	304 x 248 x 203mm	235 x 185 x 186mm	8 litres	1.65kg
UC2709	305 x 222 x 98mm	274 x 164 x 85mm	3.8 litres	0.92kg
UC2723	292 x 232 x 259mm	252 x 158 x 245mm	9.7 litres	1.75kg
UC3313	377 x 299 x 139mm	339 x 236 x 126mm	10 litres	2kg
UC3318	377 x 299 x 194mm	334 x 230 x 181mm	13.9 litres	2.3kg
UC3612	407 x 342 x 133mm	369 x 279 x 120mm	12.3 litres	2.3kg
UC3618	407 x 342 x 193mm	363 x 273 x 180mm	17.8 litres	2.6kg
UC4316	476 x 361 x 173mm	437 x 297 x 158mm	20.5 litres	3.4kg
UC4814	514 x 422 x 154mm	470 x 355 x 140mm	23.3 litres	3kg
UC5119	556 x 358 x 230mm	518 x 295 x 188mm	28.7 litres	5.8kg
UC5520	634 x 503 x 227mm	558 x 428 x 200mm	47.7 litres	5.9kg
UCLOCK	TSA Combination Padlock for Cases			62g



TRIPOD-MINI | HEAVY DUTY MINI TRIPOD

- Super heavy duty glass-filled nylon and TPR construction
- 360° ball joint head with integrated spirit level
- Easy flip lock to secure ball joint in position
- 1/4" screw for mounting devices
- Protective screw cap with hanging loop
- Non-slip grip ridges on the legs
- Max load capacity 2.5kg

WEIGHT 176g | **HEIGHT** FOLDED 170mm / OPENED 120mm



TRIPOD-SGL | SINGLE HEAD TRIPOD

- To hold a single work light
- Extendable height range between 0.7-1.8m
- Work lights can be screwed directly to the top of the tripod or simply hooked on, using the bracket
- Toughened aircraft grade aluminium construction
- ABS feet to prevent slipping and for added stability
- Quick assembly and dismantling using easy twist ergonomic height adjusters
- Can be used with the following Unilite work lights: SLR-1300, CRI-2300, SLR-2500, SLR-4400, SLR-4750, SLR-6000

WEIGHT 2560g | **DIMENSIONS** 1240 x 1240 x 1800mm



TRIPOD-DBL | DOUBLE HEAD TRIPOD WITH BAR

- To hold two work lights
- Extendable height range between 0.7-1.8m
- Work lights can be screwed in directly to the cross-bar or simply hooked on using the brackets
- Toughened aircraft grade aluminium construction
- ABS feet to prevent slipping and for added stability
- Quick assembly and dismantling using easy twist ergonomic height adjusters
- Can be used with the following Unilite work lights: SLR-1300, CRI-2300, SLR-2500, SLR-4400, SLR-4750, SLR-6000

WEIGHT 3480g | **DIMENSIONS** 1240 x 1240 x 1800mm





TRIPOD-SW | SINGLE HEAD TRIPOD WITH WHEELS & BRAKES

- To hold a single work light
- Sturdy castor wheels for easy manoeuvrability with independent foot brakes
- Extendable height range between 0.7-1.8m
- Work lights can be screwed directly to the top of the tripod or simply hooked on, using the bracket
- Toughened aircraft grade aluminium construction
- Quick assembly and dismantling using easy twist ergonomic height adjusters
- Can be used with the following Unilite work lights: SLR-1300, CRI-2300, SLR-2500, SLR-4400, SLR-4750, SLR-6000

WEIGHT 3500g | **DIMENSIONS** 1240 x 1240 x 1850mm



TRIPOD-360 | MULTI-USE TRIPOD WITH MAGNETIC PLATE

- Can hold up to 4 work lights
- Extendable height range between 0.9-1.9m
- Work lights with magnets can be placed on top or underneath the top plate
- Toughened aircraft grade aluminium construction
- ABS feet to prevent slipping and for added stability
- One tripod leg has an extra extending feature for uneven ground
- Quick assembly and dismantling using the central screw tightening height adjuster
- Can be used with the following Unilite magnetic work lights: CRI-1900, SLR-3000, CRI-3250, SLR-3500, SLR-5500
- Can be used with the following work lights when used with the LARGE-MAGNET attachment: SLR-1300, CRI-2300, SLR-2500, SLR-4400, SP-4500, SLR-4750, SLR-6000

WEIGHT 4800g | **DIMENSIONS** 1460 x 1460 x 1930mm



UNILITE




UNILITE



BUILT TOUGH



SOLMINCO PERU S.A.C
Urb. Garibaldi, Ca. Canada N°100, Dpto.302,
ILO, ILO, Moquegua - PERÚ CP. 18601
Tel. +51 053 481 054
Informes: info@solminco-peru.com
Ventas: ventas@solminco-peru.com
www.solminco-peru.com

 uniliteuk
 uniliteuk
 uniliteuk
 uniliteuk
 uniliteuk
 unilite

Unilite Limited

The LAB, Moons Moat Drive
Redditch, Worcestershire
B98 9FG - UK

T: 00[44] 1527 584 344

E: sales@unilite.co.uk

W: www.unilite.co.uk